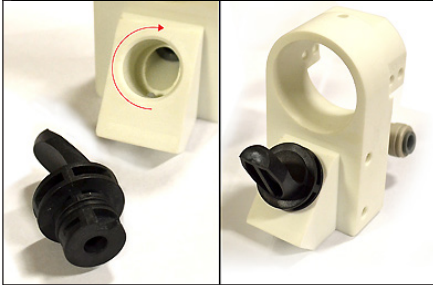


## Fully Automated Spray Fluxing System for Water Soluble/Organic Acid Fluxes

SonoFlux Servo WS allows selective fluxing of pallets or full area coverage, with user-friendly programming and recipe storage controlled via a compact notebook using Windows®-based software. This versatile system is easily integrated with all major wave solder machines. The flexibility of selective area fluxing or full board width coverage combined with the ability to spray aggressive high solids fluxes without clogging makes the SonoFlux Servo WS an important tool for PCB manufacturers worldwide.

### IMPACT QR



The new Impact QR Jet makes installation and maintenance a breeze. One simple turn locks the jet in exactly the right position, every time. This quick release design ensures repeatability and spray accuracy, and its Ryton construction withstands corrosion from ALL wave solder fluxes.

SonoFlux Servo WS is designed for complete flexibility - making it ideal for contract manufacturers making frequent product changeovers.

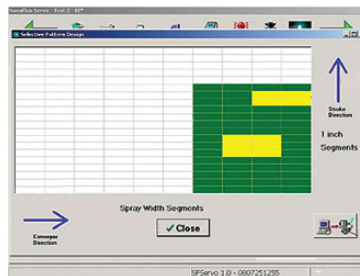


## Reciprocating Ultrasonic Spray Fluxing System



### The SonoFlux Servo system has many integrated features:

- 500,000 recipe storage
- Single or dual mode fluxing
- Easy integration and operation with all wave solder machines
- Non-clogging ultrasonic atomizing nozzle
- High precision flux delivery pump
- Conveyor speed sensing option
- Low maintenance design reciprocator
- Uniform coverage
- Reduction in flux consumption up to 80%
- Programmable selective fluxing capability



All of the wetted materials, including the pumping system, liquid lines, fittings and ultrasonic spray nozzle are constructed with materials that are proven compatible with corrosive fluxes.



## SERVO WS

The SonoFlux SERVO system can either be installed internally in your wave solder machine or is available as a stand-alone unit.

The system is also equipped with a high Impact flux transfer system to help with PCBs that have difficulty with top-side fill, such as those with thick back planes, tight lead-to-hole ratios, or contaminated components.

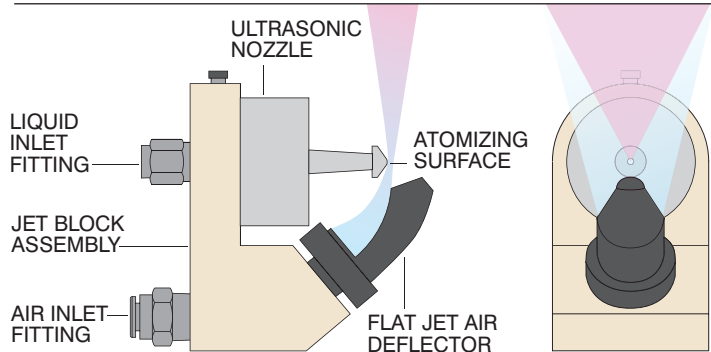
**INDUSTRY PROVEN** - Sono-Tek spray fluxing systems with an non-clogging ultrasonic nozzle and spray dispensing mechanism have been proven in thousands of industrial PCB fluxing applications worldwide.

**FLUX APPLICATION** - Flux is supplied by a gear pump connected to a non-pressurized flux tank.. The flux reservoir includes a level sensor to alert the operator to a low level flux condition. The flux is atomized into a fine mist at the tip of the non-clogging, large-orifice ultrasonic nozzle which is reciprocated below the PCB, directing flux upward.

**FASTEST PAYBACK** - In many installations, Sono-Tek systems have a reduced flux consumption by up to 80% as well as reducing solder defects by a similar percentage. Compared to foam fluxing, additional savings are achieved by the elimination of thinner and titration checks, as well as reduced waste disposal costs. Sono-Tek systems have also been shown to reduce flux consumption by up to 50% when compared to conventional spray fluxers.

**SERVICE AND SUPPORT** - Sono-tek Corporation prides itself on offering technical support second to none. North American-based service personnel and international distributors with factory-trained technicians provide this high standard of service throughout the world.

### HIGH IMPACT FLUX TRANSFER SYSTEM



### SONOFLUX SERVO SYSTEM SPECIFICATIONS

#### General Specifications

|                                     |                                                                                             |
|-------------------------------------|---------------------------------------------------------------------------------------------|
| Fluxer Type                         | Fully automated reciprocating ultrasonic nozzle with high Impact flux transfer system       |
| Construction                        | Stainless steel, titanium, Teflon®, polypropylene, Delrin®, Ertalyte®, Ryton®, EVA titanium |
| Wetted materials                    |                                                                                             |
| Storage Capability                  | 500,000 recipes                                                                             |
| User Interface                      | Notebook / PC-based                                                                         |
| Flux Types                          | RMA, RA, Alcohol-based low solids, OA, VOC-free                                             |
| PCB Width Range (optional)          | 2-18 inches (50-457 mm)<br>2-24 inches (50-610 mm)                                          |
| Flux Deposition Range               | 300-2500 $\mu\text{g}/\text{in}^2$<br>(for typical no-clean fluxes)                         |
| Programmable selective area fluxing |                                                                                             |
| Deposition Uniformity               | $\pm 10\%$                                                                                  |
| Deposition Repeatability            | $\pm 5\%$                                                                                   |
| Options                             | Conveyor Speed Sensing                                                                      |

Teflon®, Kalrez® and Delrin® are registered trademarks of E.I. DuPont de Nemours & Company  
Specifications may change without notice

|                      |                                 |
|----------------------|---------------------------------|
| Reciprocator speed   | 0 - 600 mm/sec                  |
| Conveyor Speed Range | 0 - 250 cm/min (0 - 8.2 ft/min) |

#### Service Requirements

|                 |                                                                               |
|-----------------|-------------------------------------------------------------------------------|
| Line Power      | 110/120 VAC, 50/60 Hz or<br>220/240 VAC, 50/60 Hz<br>Single phase, 900 VA max |
| Compressed Air  | Clean, dry and oil-free                                                       |
| Supply Pressure | 50 - 100 psi                                                                  |
| Capacity        | 6 cfm                                                                         |
| Exhaust         | 300 cfm minimum,<br>600 cfm recommended                                       |

**Sono-Tek is one of the originators of spray fluxing technology. As the needs of the industry have changed, we have continued our commitment to leadership through state-of-the-art design and unsurpassed customer service.**

**SONO•TEK Corporation**  
industry's leader in spray fluxing

Corporate Headquarters:  
2012 Rte. 9W, Milton, NY 12547  
Phone: (845)795-2020  
Fax: (845)795-2720

E-mail: info@sono-tek.com **ISO CERTIFIED**  
Web: www.sprayfluxing.com  
Printed in USA  
©2008 Sono-Tek Corporation. All rights reserved  
SFSERVOWS12R5