

Functions:

This machine is used for notching specimen of Charpy and Izod tests.

Standards:

GB/T1043, GB/T 1843, ISO 179, ISO 180, ASTM D 256

Parameters:

- Motor speed:n=1440r/min
- Machine dimension (length x width x height): 326×376×460mm
- Power requirements: Single-phase, 220V±10%,5A, 50Hz
- Weight: 30kg
- Specimen maximum thickness: 25mm

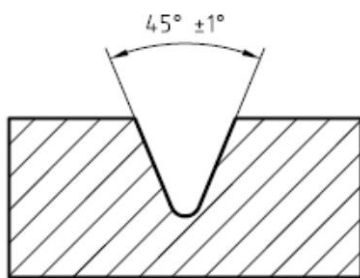
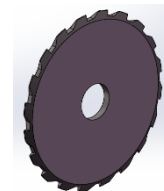


Standard accessories:

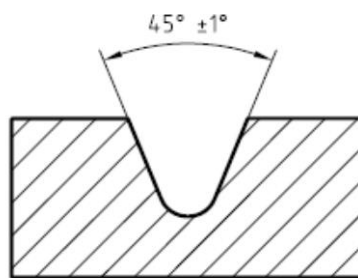
1. Main machine: 1 set
2. Cutting tooth: 1 set
3. Fixture: 1 set

Cutting tooth:

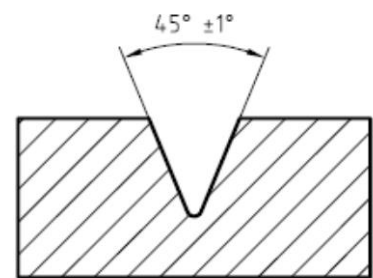
- Type A comply with GB/T1043, GB/T 1843, ISO 179, ISO 180, ASTM D256
- Type B, Comply with GB/T1043, GB/T 1843, ISO 179, ISO 180
- Type C, comply with GB/T1043, ISO 179



Radius of notch base
 $r_N = 0,25 \text{ mm} \pm 0,05 \text{ mm}$
a) Type A



Radius of notch base
 $r_N = 1,00 \text{ mm} \pm 0,05 \text{ mm}$
b) Type B



Radius of notch base
 $r_N = 0,10 \text{ mm} \pm 0,02 \text{ mm}$
c) Type C