

Capacity

2000kN

Functions

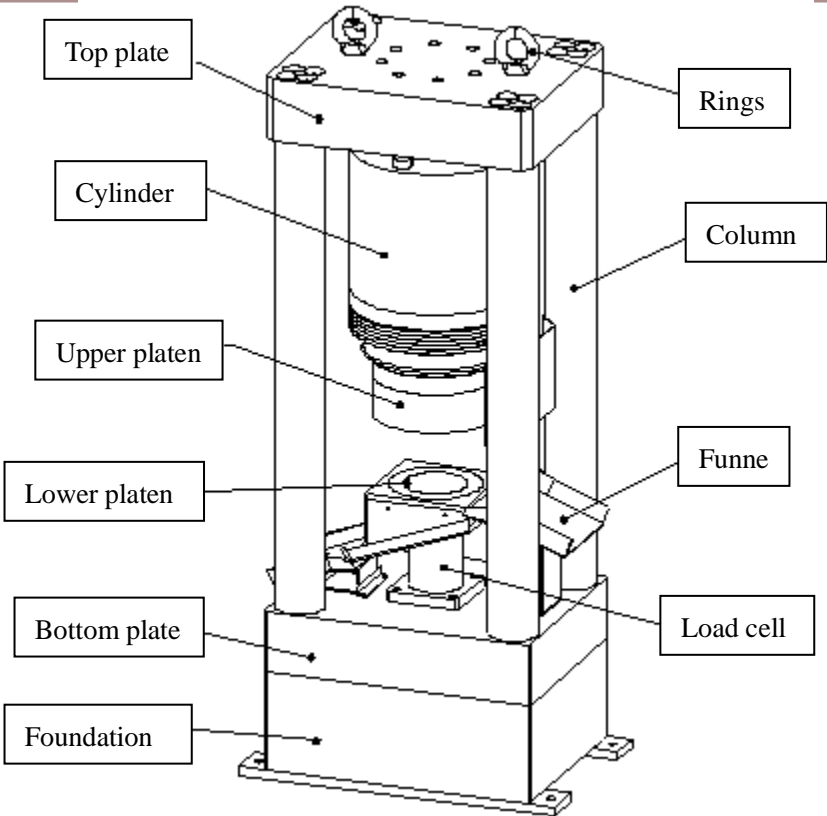
This series of compression testing machine is widely used for compression strength determination of cement, concrete and rock. Equipped with optional fixtures and measurement devices, it can be used for concrete splitting tensile test and flexure test.

Standards

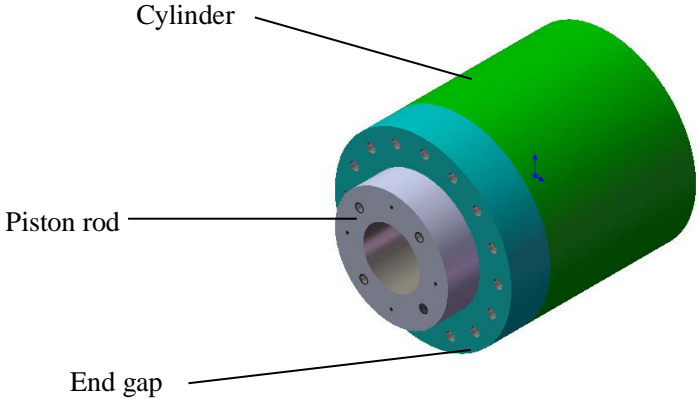
CS1, ASTM C39, AASHTO T22, GB/T 50081(Part 6)

**Load frame**

1. Ergonomically designed load frames ensure safety, reduce operator fatigue, and provide the highest level of flexibility.
2. Totally enclosed double spherical structure to improve flexibility, makes the stress more uniform, and improve the accuracy of loading force, ensure the concrete sample fracture uniformly.
3. Protection shield can guarantee the safety and observe testing situation.

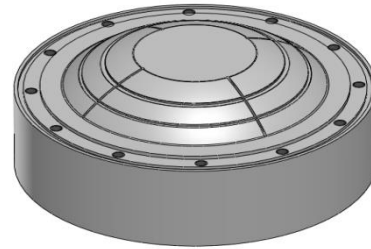
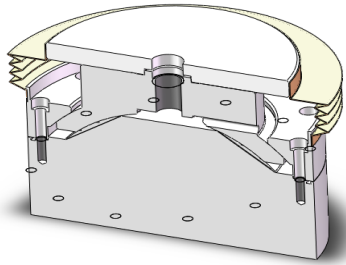


Oil Cylinder



The main oil cylinder loading in both directions; piston rod plating with Ni&Cr, coating thickness of 0.1mm, to enhance anti-corrosion property and abrasive resistance. One body casting piston to ensure impact resistance.

Fully enclosed sphere-seated platen



Fully enclosed double spherical structure improves flexibility, makes the stress more uniform, and improves the accuracy of loading force, ensures the concrete sample fractures uniformly.

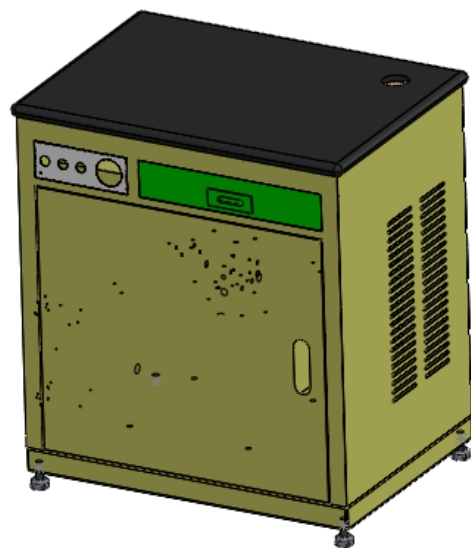
Load cell

- Built-in load cell is assembled inside the piston for direct measurement with high accuracy
- High precise load cell measures and captures sensitively tension and compression force, high accuracy load measurement resolution reaches 1/500000 with no steps.
- American brand load cell ensures high precision and repeatability.

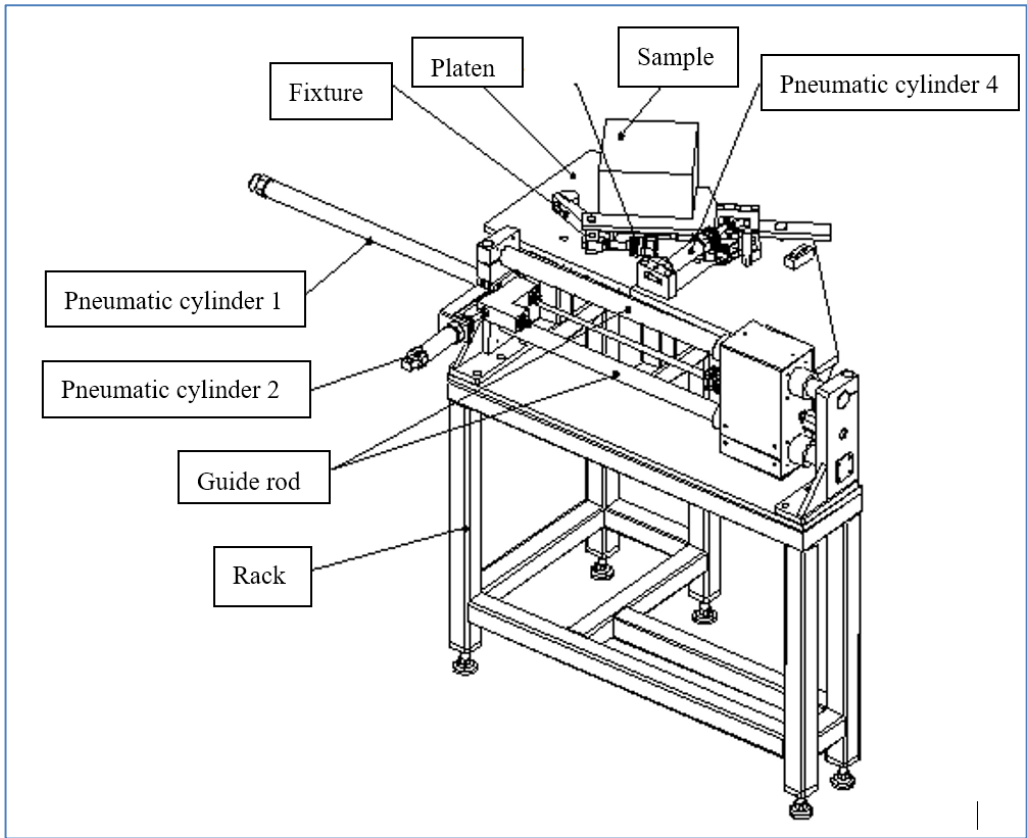


Hydraulic power station

- Gear pump, with high pressure and stability, low noise and high cost performance.
- Using servo motor to reduce the number of hydraulic elements and valves, easy to install and maintenance.
- Pressure overload protection function: RV will over flow when the pressure overloaded, to ensure the safety.



Sample feeding system



Use several pneumatic cylinders linkwork to push the sample into the testing machine to do the test from the roller line.

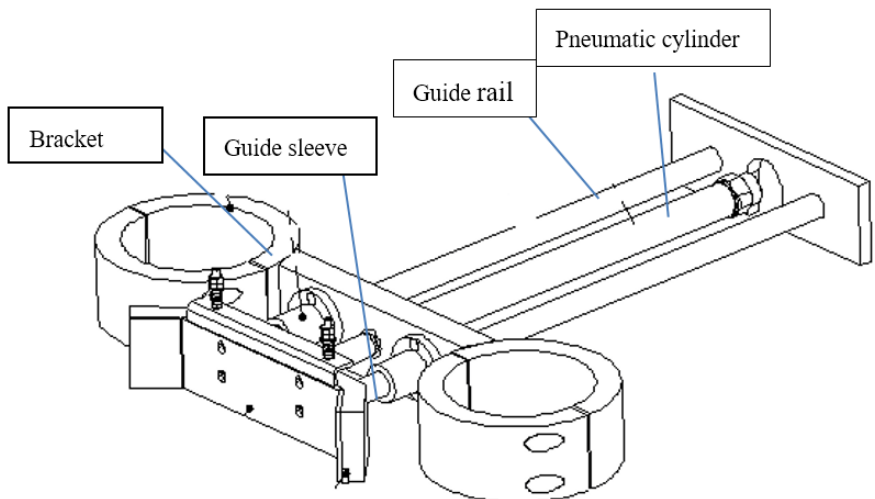
Pneumatic cylinder1: push the sample into the test area.

Pneumatic cylinder2 used for big sample (150) or small sample (100).

Pneumatic cylinder3 used for clamping sample.

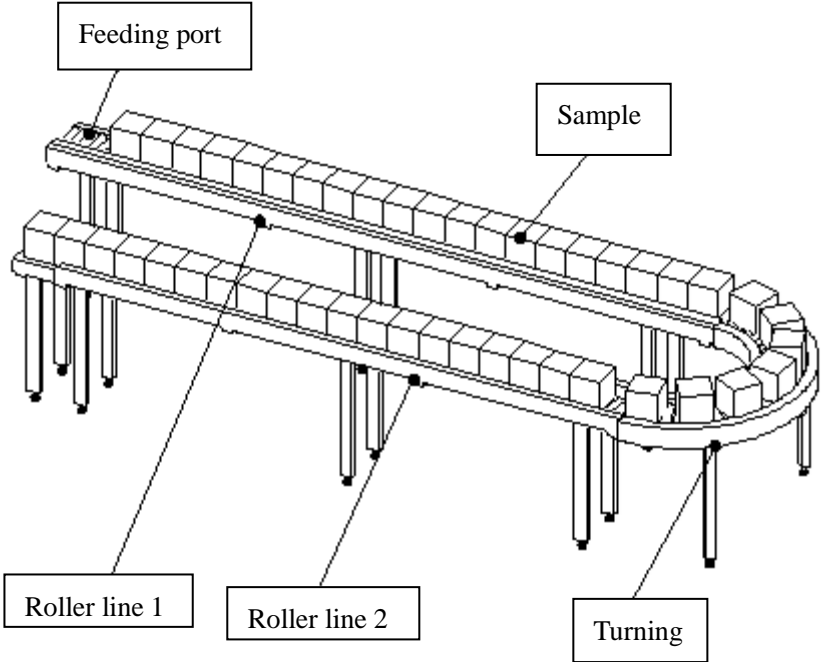
Pneumatic cylinder4 used for rotating sample.

Sample collecting system



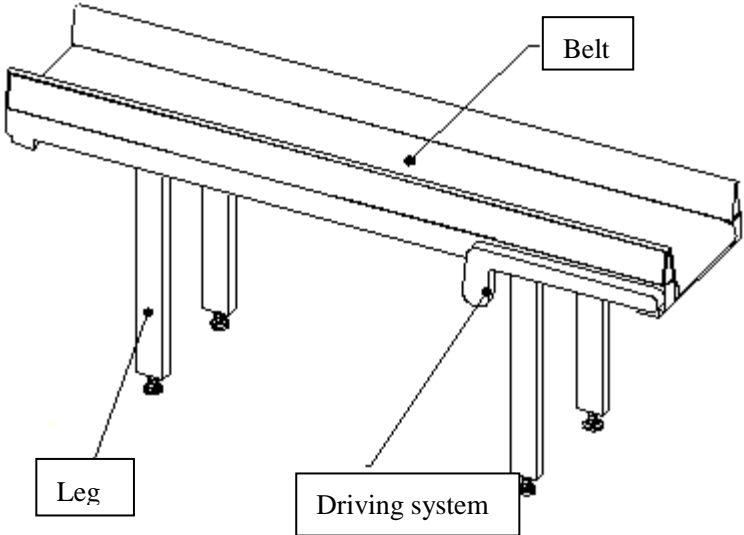
Push out the broken sample from test area, and clean the lower plate simultaneously.

Charging line



The charging line is used to place the sample and feed it to the port automatically.

Collecting line



The collecting line is used to carry broken samples.

Specifications

Model	HCT206
Type	D
Capacity (kN)	2000
Calibration accuracy	Class 1
Force accuracy	±1%
Force range	10% ~ 100%FS
Force resolution	1/200000FS
Frame structure	One-body casting
Column spacing (mm)	520
Maximum compression space (mm)	320
Platen adjustment	Spacing block
Compression platens (mm)	Φ250
Actuator (piston) stroke (mm)	140
Testing speed (mm/min)	0~100
Piston fast return speed (mm/min)	250
Force loading speed (kN/s)	0.02%~1%FS/s
Frame dimension (LxWxH) (mm)	600×410×1350
Frame weight (Kg)	2000
Power supply	3-phase 380VAC±10%
Power consumption (kw)	4
Hydraulic Power Unit dimension (LxWxH) (mm)	550×360×750
Oil tank volume (L)	70
HPU Weight (kg)	250



Shenzhen Wance Testing Machine Co., Ltd.

No.9, Shuike Road, Tangwei, Guangming District,

Shenzhen 518132, China

Tel: +86-755-23057996 Fax: +86-755-23057995

Email: sales@wance.net.cn

www.wance.net