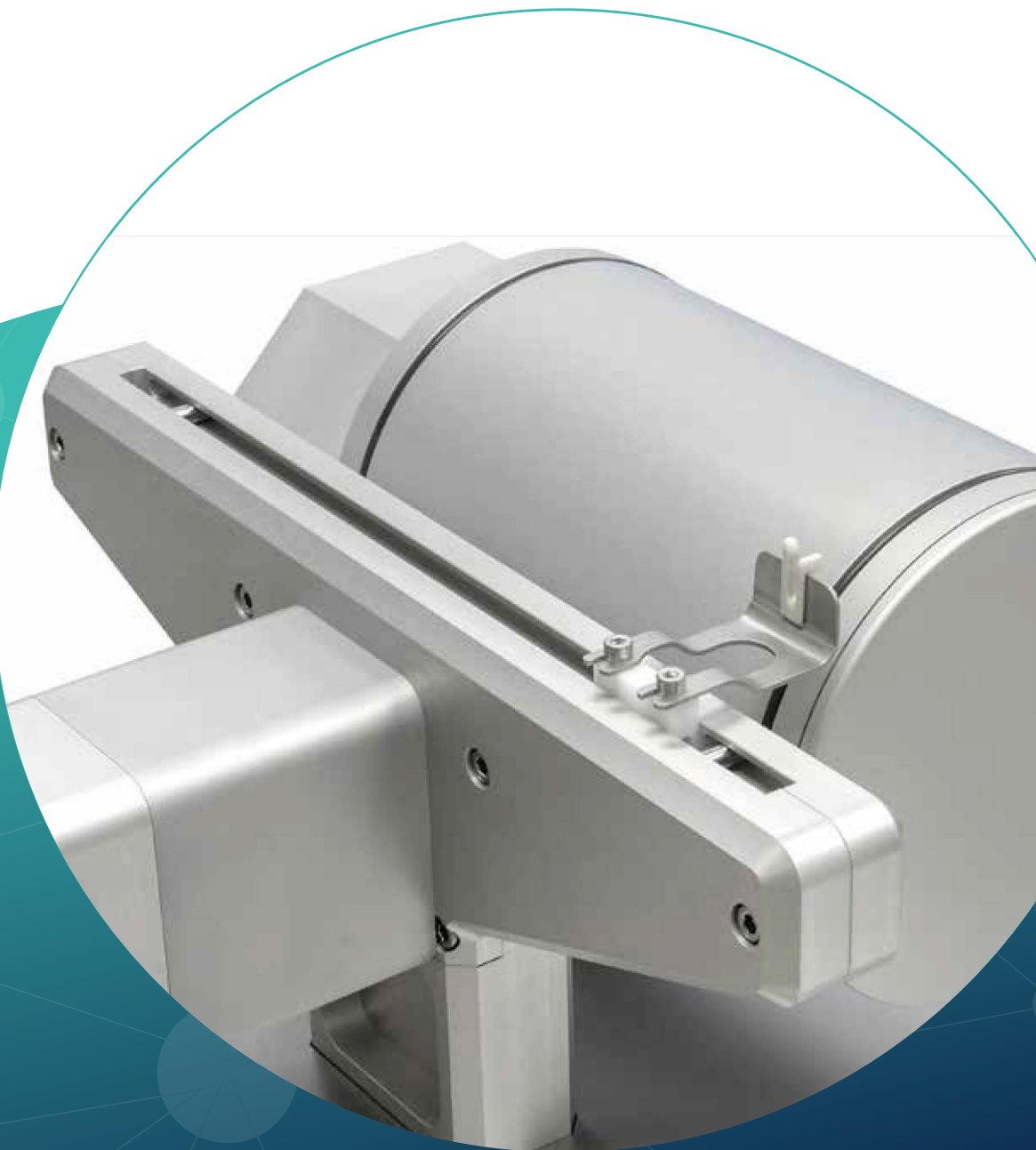




Xplore DWL

Double winder line

**A high quality add-on for fibre development**



# Accessories for formulation development:

## **reliable, reproducible and fast R&D results**

The Xplore double winder line (DWL) is specially designed to be used to wind, elongate and de-wind polymer fibres. It enables you to pass a fibre through a temperature-controlled oven for heat treatment or a bath of liquid with additives to impregnate the fibre(s), as a result altering the properties of the mono or multifilament fibre.

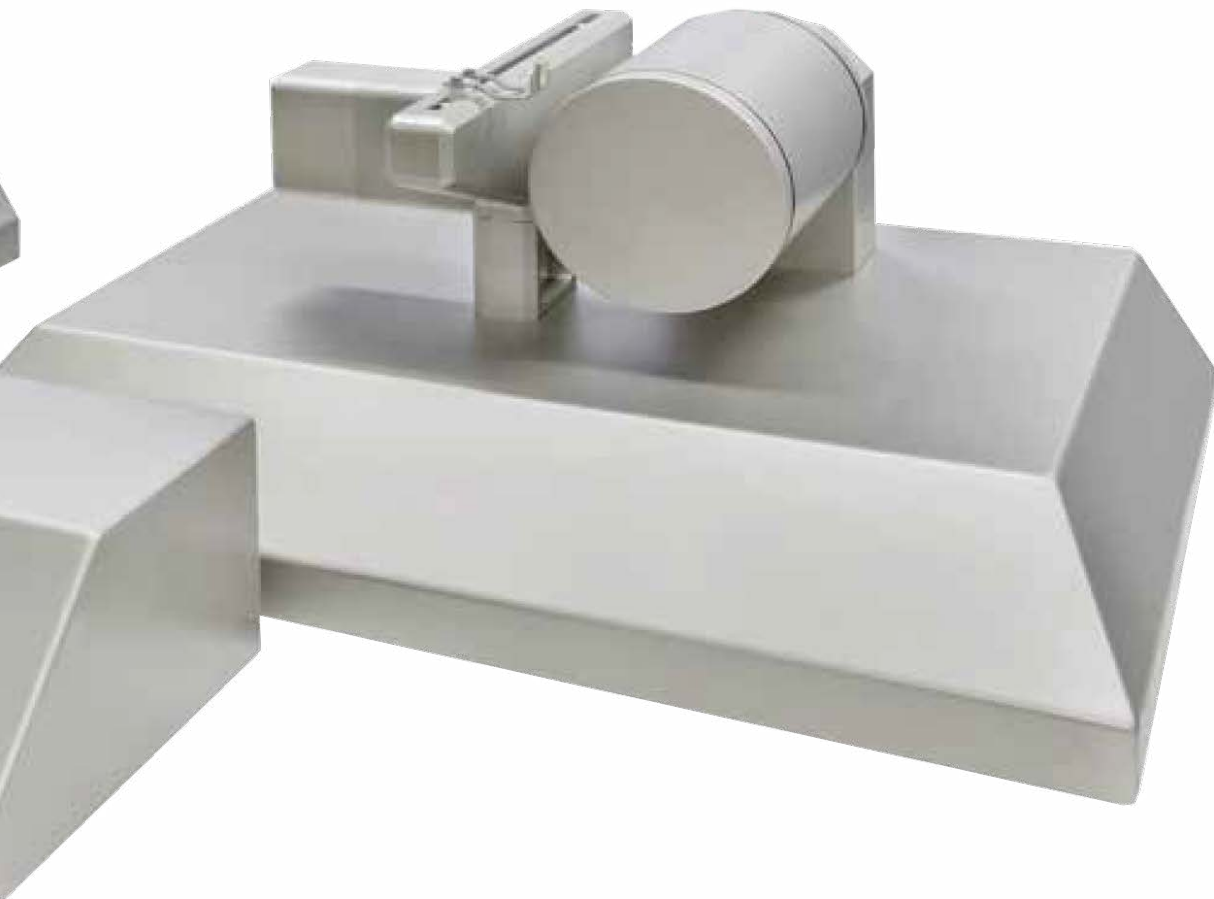
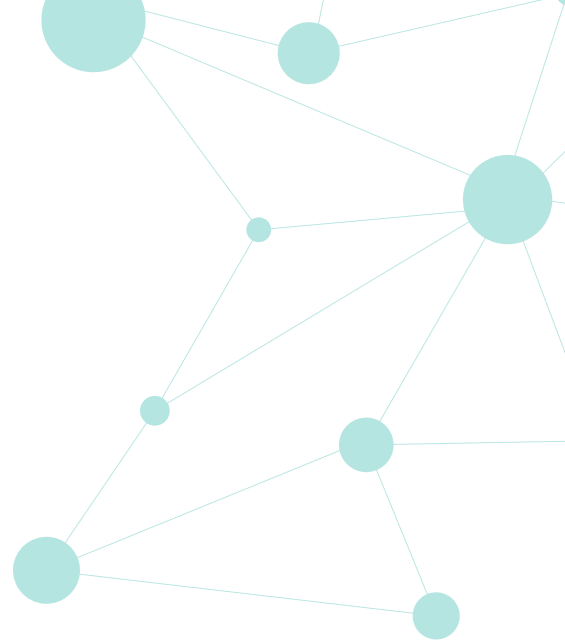
The DWL can also be utilised as a winding and de-winding instrument for testing the optimum wind and de-wind conditions for (brittle) fibres, e.g. lignin to enhance and or speed up fibre R&D (e.g. lignin to C-fibre R&D). The DWL is designed to enable an experienced process engineer to wind and unwind a fragile monofilament or multifilament in between a carbonisation oven

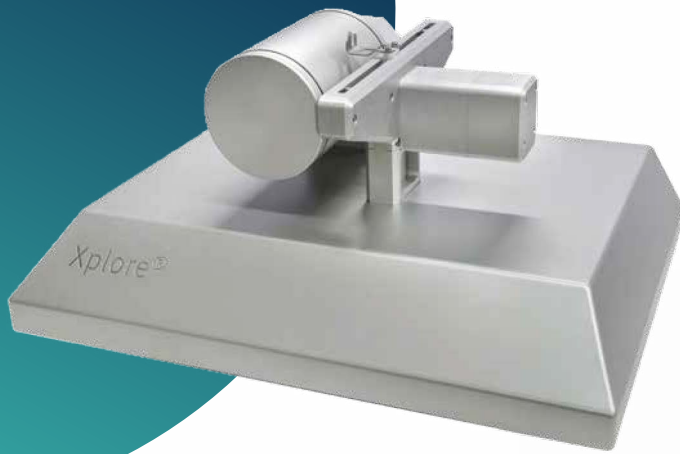
to treat for instance a lignin monofilament into a C-fibre (this particular oven is not included). Or to guide the multi or monofilament fibre through a liquid or solvent bath. The winding, unwinding speed and elongation ratio of the DWL are adjustable, allowing it to be precisely tailored to each fibre heating or coating application.



### Benefits:

- Large operating window
- Able to be used with mono and multifilament fibres
- Prolonged draw and stretching rates possible
- Can be retrofitted with an existing oven or liquid bath





### Technical Specifications:

- Elongation ratio: 1:4
- Programmable winding and de-winding sequence (10 frames/intervals)
- Traverse guide pitch: 0,1 - 4 mm, increments of 0,1 mm
- Winding and unwinding width 200 mm,
- Winding and unwinding rolls dimension: Ø142 mm
- Dedicated carton bobbins included
- Digital readout of winding and un-winding speed
- Speed range: 10 - 2000 mm/min, increments of 10 mm/min
- Overall dimensions (h x w x l): 67 x 49,5 x 450 cm each unit
- Total weight: 75 kg
- 230V 50/60 Hz

#### **Xplore Instruments BV**

Arendstraat 5  
6135 KT, Sittard  
The Netherlands

Tel: +31 46 208 97 70  
Fax: +31 46 208 97 71

info@xplore-together.com  
www.xplore-together.com  
Trade Register: 60040114